



গণপ্রজাতন্ত্রী বাংলাদেশ সরকার
প্রাণিসম্পদ অধিদপ্তর
কৃষিখামার সড়ক, ফার্মগেট, ঢাকা-১২১৫
www.dls.gov.bd

স্মারক নং- ৩৩.০১.০০০০.১১০.৫৩.০১১.২০- ৯৩১

তারিখ: ২৭ কার্তিক, ১৪২৭ বঙ্গাব্দ
১২ নভেম্বর, ২০২০ খ্রীষ্টাব্দ

ব্যবস্থাপনা পরিচালক
রংপুর পোল্ট্রি লি., ডেইরী ডিভিশন
(Farm: Khaprikhal, Rangpur)
উপজেলা-গংগাচড়া, রংপুর।

বিষয় : World Wide Sire (WWS) Ltd (Selec Sire) USA হতে ফিজিয়ান বুলের ১৫০০ (এক হাজার পাঁচশত)
মাত্রা বীজ (Semen) আমদানীর অনুমতি পত্রের ০২ নং শর্তানুসারে ষাঁড় সমূহের Pedigree & Performance
অনুমোদন প্রদান সংক্রান্ত।

সূত্র : রংপুর পোল্ট্রি লি., ডেইরী ডিভিশন (Farm: Khaprikhal, Rangpur) এর ২৭ অক্টোবর, ৪ এবং ৮ নভেম্বর, ২০২০
তারিখের আবেদন পত্র।

উপর্যুক্ত বিষয় ও সূত্রের প্রেক্ষিতে জানানো যাচ্ছে যে, প্রাণিসম্পদ অধিদপ্তরের নথি নং-৩৩.০১.০০০০.১১০.৫৩.০২৭.১৫-
৭১২ তারিখ-১৬/০৯/২০২০ মোতাবেক প্রদত্ত আদেশের ০২ নং শর্ত মোতাবেক ষাঁড় সমূহের Pedigree & Performance
অনুমোদন প্রদান করা হলো।

সংযুক্ত: অনুমোদিত Pedigree & Performance- ০১ কপি (০৯ পাতা)।

(ডা. পল্লব কুমার দত্ত)

সহকারী পরিচালক (প্রশিক্ষণ)

পক্ষে-মহাপরিচালক (গেড-১)

প্রাণিসম্পদ অধিদপ্তর, বাংলাদেশ, ঢাকা

ফোন: +৮৮-০২-৯১১৫৯৩৬

E-mail: adtraining.dls@gmail.com

training@dls.gov.bd

স্মারক নং- ৩৩.০১.০০০০.১১০.৫৩.০১১.২০-৯৩১/১(৮)

তারিখ: ২৭ কার্তিক, ১৪২৭ বঙ্গাব্দ
১২ নভেম্বর, ২০২০ খ্রীষ্টাব্দ

জ্ঞাতার্থে ও কার্যার্থে (প্রয়োজ্য ক্ষেত্রে) অনুলিপি প্রেরণ করা হলো:

- ১। কমিশনার অব কাস্টমস, কাস্টমস হাউস, হযরত শাহজালাল আন্তর্জাতিক বিমান বন্দর, বাংলাদেশ, ঢাকা।
- ২। উপপরিচালক, কৃত্রিম প্রজনন ও ঘাস উৎপাদন, সাতার, ডিএলএস, ঢাকা।
- ৩। জেলা প্রাণিসম্পদ কর্মকর্তা, রংপুর।
- ৪। সহকারী পরিচালক (এআই ল্যাব), কেন্দ্রীয় গো-প্রজনন ও দুগ্ধ খামার, সাতার, ঢাকা।
- ৫। উপজেলা প্রাণিসম্পদ কর্মকর্তা, গংগাচড়া, রংপুর।
- ৬। কোয়ারেন্টাইন অফিসার, লাইভস্টক কোয়ারেন্টাইন স্টেশন, হযরত শাহজালাল আন্তর্জাতিক বিমান বন্দর, বাংলাদেশ, ঢাকা।
- ৭। আইসিটি অফিসার, আইসিটি শাখা, ডিএলএস, ঢাকা (ডিএলএস এর ওয়েবসাইটে প্রকাশের জন্য)।
- ৮। অফিস কপি।

সহকারী পরিচালক (প্রশিক্ষণ)

পক্ষে-মহাপরিচালক (গেড-১)

PASSAT 7H012659

HOUSA000073757159

L-L-M-DAIRY POND PASSAT-ET TR TP TY TV TL TD HH1T HH2T HH3T HH4T HH5T HH6T

PONDER X MOGUL X JET STREAM

Born On: June 12, 2014

Beta-casein: A2A2 Kappa-casein: AA EFI: 7.4% aAa: 426315

Sire: DE-SU LTM PONDER 11345-ET

Dam: L-L-M-DAIRY MOGUL PIER-ET VG-87

5-02 2X 365D 16837 kgM 3.7% 631 kgF 3.1% 520 kgP

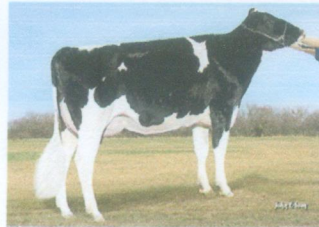
MGS: MOUNTFIELD SSI DCY MOGUL-ET

Daughter Average:

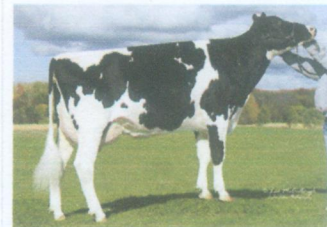
13011 kgM 511 kgF 3.90%F 406 kgP 3.10%P



Do-Rene Passat Jetta 13279



Palla Passat 63375-Grade



MGD L-L-M-Dairy J Stream Procky

INDEXES

TPI	2759
NM\$	710
CM\$	710
Feed Efficiency (%)	175
DWP\$	912
WT\$	190
CW\$	-1

WELLNESS TRAITS

Mastitis/Rel.%	1.4/78	104/59
Lameness/Rel.%		105/57
Retained Placenta/Rel.%	0.0/69	104/66
Metritis/Rel.%	1.0/69	110/65
Cow Abortion/Rel.%		94/45
Twinning/Rel.%		93/63
Cystic Ovary/Rel.%		100/38
Hypocalcemia/Milk Fever/Rel. %	0.0/59	100/49
Ketosis/Rel.%	0.6/63	105/65
Displaced Abomasum/Rel.%	0.5/67	104/56
Cow Respiratory Disease/Rel.%		99/54
Calf Respiratory/Rel. %		101/70
Calf Scours/Rel. %		99/75
Calf Livability/Rel. %		100/85

CDCB ZOETIS

PRODUCTION

PTA Milk (lbs)	1318
PTA Protein (lbs)	38
PTA Protein (%)	-0.01
PTA Fat (lbs)	84
PTA Fat (%)	0.11
Production Reliability %	98
Dtrs/Herds	826/193

DAUGHTER FERTILITY

Fertility Index	2.2
DPR/Rel.%	1.7/90
HCR/Rel.%	1.7/91
CCR/Rel.%	3.1/90

SIRE FERTILITY

SCR/Rel %	0.8/99
-----------	--------

TYPE

PTA Type	0.14
Udder Composite	0.54
Feet & Leg Composite	-0.18
Body Weight Composite	-0.65
Dairy Composite	-0.43
Type Reliability %	92
Dtrs/Herds	102/35

MANAGEMENT TRAITS

SCE/Rel %	6.5/99
DCE/Rel.%	4.2/88
Gestation Length/Rel.%	-0.6/99
Early First Calving/Rel.%	5.7/80
SSB/Rel.%	7.8/97
DSB/Rel.%	4.0/89
Productive Life/Rel.%	5.8/89
Livability/Rel.%	1.0/75
SCS/Rel.%	2.90/97
Milking Speed/Rel.%	103/74

Stature	Short	-0.81	Tall
Strength	Frail	-0.58	Strong
Body Depth	Shallow	-0.76	Deep
Dairy Form	Tight Ribbed	-0.11	Open Ribbed
Rump Width	Narrow	-0.21	Wide
Rump Angle	High Pins	0.21	Sloped
Rear Leg (side view)	Posty	-0.29	Sickled
Rear Leg (rear view)	Hock-in	-0.32	Straight
Foot Angle	Low Angle	-0.69	Steep Angle
Feet & Leg Score	Low	-0.31	High
Fore Udder	Loose	0.74	Strong
Rear Udder Height	Low	1.19	High
Rear Udder Width	Narrow	1.09	Wide
Udder Cleft	Weak	-1.64	Strong
Udder Depth	Deep	-0.09	Shallow
Front Teat Placement	Wide	-0.01	Close
Rear Teat Placement	Wide	-0.84	Close
Teat Length	Short	-1.72	Long

WORLD WIDE SIRES LTD.
www.wwsires.com • Email: info@wwsires.com

Information for April 2020, provided by the following:
Production: CDCB-Genomic Type:CDCB/HA Genomic Service Sire Calving Ease: IB/MACE Daughter Calving Ease:IB/MACE Wellness: CDCB & Zoetis 04/20
Qualifies for export to the E.U.

অনুমোদিত

(Signature)

(ডা. পল্লব কুমার দত্ত)
সহকারী পরিচালক (প্রশিক্ষণ)
প্রশিক্ষণ অধিদপ্তর, বাবুগঞ্জ, ময়মনসিংহ।



OFFICIAL HOLSTEIN PEDIGREE



U.S. Registered Holsteins
FOR MAXIMUM PROFIT

Holstein Association USA, Inc.

U.S. Registered Holsteins
FOR MAXIMUM PROFIT

www.holsteinusa.com

99% Registered Holstein Ancestry (RHA-I)

L-L-M-DAIRY POND PASSAT-ET P9 49K GTPI 90%R
USA 73757159 99%RHA-I TR TP TY TV TL TD
3-00 87 VV+V

PTA +1524M +91F +50P 93%R12/2018
PTA +868NM +.12%F +.01%P 100%US
PTA +6.3PL 2.87SCS +3.4DPR 2.1%DCE
PTA +1.10T +1.40UDC +.51FLC 88%R12/2018
PTA +189FE +3.5FI 6.3%SCF
D/AV 28437M 3.9%F 1100F 3.1%P 886P 80.0T

7HO12659 PASSAT
06/12/2014 MALE

SELECT SIRE, INC.
11740 US HIGHWAY 42 N
PLAIN CITY, OH 43064-9440
614/873-4683

S-S-I DOMAIN LITHIUM-ET 50K GTPI 99%R
840003004672704 100%RHA-NA TY TV TL TD
5-04 85 VV++V 09/25/2010

PTA +454M -2F +17P 99%R12/2018
PTA +305NM -.07%F +.01%P 89%US
PTA +5.4PL 2.71SCS +3.5DPR 5.5%DCE
PTA -.19T +.16UDC +.17FLC 99%R12/2018

DE-SU 9990-ET 3K GTPI 92%R
USA 66757067 100%RHA-NA
8-02 90 EVVEE DOM 05/29/2010

PTA -499M +71F -2P 92%R12/2018
PTA +644NM +.34%F +.05%P
PTA +6.3PL 2.74SCS +5.8DPR 3.7%DCE
PTA -.14T +.39UDC +.30FLC 91%R12/2018

AGE	X	DAYS	MILK	DCRM	%	FAT	%	PRT	DCRC
***	2-02	3	305	22980	98	5.0	1146	3.6	838 84
			365	26940	98	5.1	1377	3.7	994 84
*	5-11	3	250	19590		5.2	1009	3.6	701
***	6-11	3	296	22280	97	4.6	1031	3.3	742 83
LIFE			1326	101980		4.9	5013	3.5	3604

DE-SU LTM PONDER 11345-ET P9 50K GTPI 98%R
USA 70626097 100%RHA-NA TY TV TL TD
GM 12/17 06/25/2012

PTA +1628M +50F +42P 99%R12/2018
PTA +795NM -.04%F -.03%P 99%US
PTA +8.6PL 2.67SCS +6.8DPR 2.5%DCE
PTA -.16T +.63UDC +.04FLC 97%R12/2018
PTA +111FE +6.7FI 5.2%SCF

L-L-M-DAIRY MOGUL PIER-ET 50K GTPI 84%R
USA 71640106 99%RHA-I
5-05 87 VEVVV 06/22/2012

PTA +1183M +48F +43P 85%R12/2018
PTA +467NM +.01%F +.02%P
PTA +2.6PL 3.11SCS +.4DPR 5.3%DCE
PTA +1.59T +1.50UDC +1.37FLC 84%R12/2018
PTA +119FE +1.0FI 7.3%SCF

AGE	X	DAYS	MILK	DCRM	%	FAT	%	PRT	DCRC
***	2-00	2	305	24400	95	3.9	948	3.3	803 95
			356	27330	95	4.0	1083	3.4	928 95
***	3-02	2	305	29280	95	3.9	1139	3.3	977 95
			314	29820	95	3.9	1165	3.4	999 95
***	4-03	2	286	29210	94	3.4	1003	3.3	956 94
***	5-02	2	305	33030	95	3.7	1215	3.2	1065 95
			365	37120	95	3.7	1391	3.3	1216 95
LIFE			1322	123540		3.8	4645	3.3	4101

MOUNTFIELD SSI DCY MOGUL-ET 50K GTPI 99%R
840003006972816 100%RHA-NA TR TP TC TY
7-00 93 EEVE GM 8/15 06/22/2010

PTA +1201M +75F +39P 99%R12/2018
PTA +612NM +.11%F +.01%P 66%US
PTA +2.4PL 3.02SCS -.8DPR 3.9%DCE
PTA +2.17T +3.12UDC +2.09FLC 99%R12/2018

L-L-M-DAIRY J STREAM PROCKY 50K GTPI 91%R
USA 64955263 98%RHA-I TY TV TL
7-01 87 EVEVV DOM 06/01/2008

AGE	X	DAYS	MILK	DCRM	%	FAT	%	PRT	DCRC
PTA			+518M	+4F	+24P				92%R12/2018
PTA			+276NM	-.06%F	+.03%P				
PTA			+4.0PL	2.90SCS	+1.7DPR				7.5%DCE
PTA			+1.31T	+.81UDC	+1.39FLC				91%R12/2018
***	1-11	2	305	27290	95	3.9	1064	3.4	922 95
			365	32760	95	3.9	1262	3.4	1113 95
***	6-11	2	305	21370	95	3.9	836	3.4	726 95
			365	25870	95	3.9	1005	3.4	885 95

অনুমোদিত

(Signature)
(ডা. গুলব কুমার দত্ত)
সহকারী পরিচালক (প্রশিক্ষণ)
জগদীশ্বর বাবাসাহেব, মসলা



Date: June 26, 2020

From: Justin Tank, DVM, Staff Veterinarian, Select Sires, Inc.

To: Whom it may concern

Regarding: 507HO12659 L-L-M-DAIRY POND PASSAT-ET 73757159

The bull has been tested annually unless stipulated in the test protocol against the diseases listed below with negative results by the Veterinary authorities of the exporting country:

- | | |
|-----------------------|--|
| 1. Tuberculosis | Intradermal tuberculin test in the caudal fold with bovine PPD tuberculin. |
| 2. Brucellosis | Standard tube agglutination test or Buffered Brucella Antigen test or Complement Fixation test. |
| 3. Trichomoniasis | Culture of preputial washing with microscopic examinations of culture. |
| 4. Campylobacteriosis | Culture of preputial washing with microscopic examinations of culture. |
| 5. Leptospirosis | Microtiter agglutination test for serotypes: L. pomona, L. hardjo, L. icterohemorrhagiae, L. canicola and L. grippityphosa |

Justin Tank 26-Jun-2020

Name: Justin Tank, D.V.M.
Address: Select Sires, Inc.
11740 U. S. 42, Plain City, Ohio 43064

অনুমোদিত

[Signature]

(ডা. পল্লব কুমার দত্ত)
সহকারী পরিচালক (প্রশিক্ষণ)
প্রাণিসম্পদ অধিদপ্তর বাংলাদেশ, ঢাকা।

YOUR SUCCESS Our Passion.

DONATELLO 7H011525

HO840003006989495

MR OCD ROBUST DONATELLO-ET TR TP TY TV TL TD HH1T HH2T HH3T HH4T HH5T HH6T

ROBUST X PLANET X ELEGANT

Born On: February 03, 2011

Beta-casein: A2A2 Kappa-casein: BB EFI: 8.4% aAa: 315246

Sire: ROYLANE SOCRA ROBUST-ET

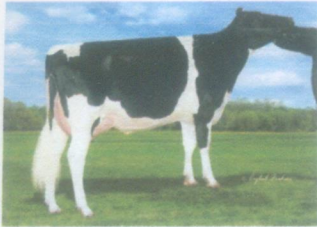
Dam: OCD PLANET DANICA-ET EX-93

3-01 3X 365D 17799 kgM 3.5% 628 kgF 3.0% 529 kgP

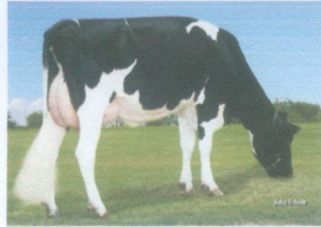
MGS: ENSENADA TABOO PLANET-ET

Daughter Average:

13123 kgM 520 kgF 4.00%F 412 kgP 3.10%P



Kings-Ransom Donatell Lewie



Plain-Knoll Donatello 6632



S-S-I Donatello Bela 8652-ET

INDEXES

TPI	2525
NM\$	500
CM\$	517
Feed Efficiency (\$)	143
DWP\$	588
WT\$	61
CW\$	-26

PRODUCTION

PTA Milk (lbs)	731
PTA Protein (lbs)	32
PTA Protein (%)	0.03
PTA Fat (lbs)	53
PTA Fat (%)	0.09
Production Reliability %	99
Dtrs/Herds	22886/2944

TYPE

PTA Type	0.18
Udder Composite	0.41
Feet & Leg Composite	-0.09
Body Weight Composite	-1.70
Dairy Composite	0.25
Type Reliability %	99
Dtrs/Herds	6214/1363

WELLNESS TRAITS

CDCB ZOETIS

Mastitis/Rel.%	0.6/99	101/97
Lameness/Rel.%		99/96
Retained Placenta/Rel.%	-0.1/96	102/97
Metritis/Rel.%	0.8/97	104/97
Cow Abortion/Rel.%		94/94
Twinning/Rel.%		93/97
Cystic Ovary/Rel.%		102/78
Hypocalcemia/Milk Fever/Rel.%	-0.1/92	102/95
Ketosis/Rel.%	0.8/96	103/97
Displaced Abomasum/Rel.%	0.5/96	102/95
Cow Respiratory Disease/Rel.%		103/95
Calf Respiratory/Rel.%		97/97
Calf Scours/Rel.%		113/97
Calf Livability/Rel.%		88/98

DAUGHTER FERTILITY

Fertility Index	1.4
DPR/Rel.%	1.1/99
HCR/Rel.%	1.6/99
CCR/Rel.%	2.5/99

SIRE FERTILITY

SCR/Rel.%	0.7/99
-----------	--------

MANAGEMENT TRAITS

SCE/Rel.%	7.2/99
DCE/Rel.%	5.5/99
Gestation Length/Rel.%	-1.1/99
Early First Calving/Rel.%	2.2/99
SSB/Rel.%	8.4/99
DSB/Rel.%	6.4/99
Productive Life/Rel.%	2.9/99
Livability/Rel.%	2.5/97
SCS/Rel.%	2.98/99
Milking Speed/Rel.%	100/0

Stature	Short	0.16	Tall
Strength	Frail	-1.18	Strong
Body Depth	Shallow	-0.41	Deep
Dairy Form	Tight Ribbed	1.70	Open Ribbed
Rump Width	Narrow	-0.34	Wide
Rump Angle	High Pins	0.99	Sloped
Rear Leg (side view)	Posty	1.33	Sickled
Rear Leg (rear view)	Hock-in	-0.44	Straight
Foot Angle	Low Angle	-0.74	Steep Angle
Feet & Leg Score	Low	0.16	High
Fore Udder	Loose	-0.48	Strong
Rear Udder Height	Low	0.74	High
Rear Udder Width	Narrow	0.68	Wide
Udder Cleft	Weak	1.72	Strong
Udder Depth	Deep	0.26	Shallow
Front Teat Placement	Wide	1.37	Close
Rear Teat Placement	Wide	1.53	Close
Teat Length	Short	-2.06	Long



WORLD WIDE SIRES LTD.
www.wwsires.com • Email: info@wwsires.com

Production: IB/MACE - USA Type:CDCB/HA Genomic Service Sire Calving Ease: IB/MACE Daughter Calving Ease:IB/MACE Wellness: CDCB & Zoetis 04/20
Qualifies for export to the E.U.

অনুমোদিত

(Signature)

ডা. পল্লব কুমার দত্ত
সহকারী পরিচালক (প্রশিক্ষণ)
প্রাণিসম্পদ অধিদপ্তর বাংলাদেশ, ঢাকা।



OFFICIAL HOLSTEIN PEDIGREE



U.S. Registered Holsteins
FOR MAXIMUM PROFIT

Holstein Association USA, Inc.

U.S. Registered Holsteins
FOR MAXIMUM PROFIT

www.holsteinusa.com

100% Registered Holstein Ancestry (RHA-NA)

MR OCD ROBUST DONATELLO-ET
840003006989495 100%RHA-NA TR TP TY TV
GM 12/16

50K GTPI 99%R
+2484 G
PTA +1145M +73F +47P 99%R 8/2019
PTA +728NM +.11%F +.04%P 66%US
PTA +3.7PL 2.89SCS +1.5DPR 3.5%DCE
PTA +1.06T +1.30UDC +.50FLC 99%R 8/2019
PTA +182FE +1.9FI 6.1%SCE
D/AV 28903M 4.0%F 1145F 3.1%P 907P 81.3T

SELECT SIRES, INC.
11740 US HIGHWAY 42 N
PLAIN CITY, OH 43064-9440
614/873-4683

7H011525 DONATELLO
02/03/2011 MALE

50K GTPI 99%R
+1829 G
VELVET-VIEW-KJ SOCRATES-ET
USA 133126053 100%RHA-NA TR TV TL TD
5-07 94 EEEE GM 8/09 07/16/2002

PTA +671M +35F +6P 99%R 8/2019
PTA +316NM +.04%F -.05%P 76%US
PTA +3.3PL 2.68SCS -2.5DPR 6.1%DCE
PTA -.27T -.58UDC -.15FLC 99%R 8/2019

50K GTPI 95%R
+2305 G
SEAGULL-BAY OMAN MIRROR-ET
USA 62115945 100%RHA-NA
3-09 86 +VVVV DOM 11/12/2004

PTA +482M +56F +44P 96%R 8/2019
PTA +542NM +.14%F +.11%P
PTA +2.6PL 2.96SCS +2.3DPR 6.5%DCE
PTA +.57T +.74UDC +1.13FLC 95%R 8/2019

AGE	X	DAYS	MILK	DCRM	%	FAT	%	PRT	DCRC
***	1-11	2	305	26850	96	4.2	1120	3.5	935 96
			340	29320	96	4.2	1230	3.5	1026 96
***	3-00	2	305	32310	100	4.3	1400	3.6	1148 100X
			365	36430	100	4.4	1606	3.6	1304 100X

50K GTPI 99%R
+2434 G
ROYLANE SOCRA ROBUST-ET
USA 64966739 100%RHA-NA TR TV TL TD
3-03 88 VVVV GM 8/15 12/23/2008

PTA +925M +69F +42P 99%R 8/2019
PTA +741NM +.12%F +.05%P 98%US
PTA +5.9PL 2.95SCS +.5DPR 4.0%DCE
PTA +.58T +1.15UDC +1.45FLC 99%R 8/2019
PTA +167FE +1.0FI 6.1%SCE

HD GTPI 99%R
+2010 G
ENSENADA TABOO PLANET-ET
USA 60597003 100%RHA-NA TR TP TC TY TV
14-03 92 EEEV GM 12/13 03/03/2003

PTA +1443M +35F +42P 99%R 8/2019
PTA +429NM -.07%F -.01%P 57%US
PTA +3.8PL 3.05SCS -2.0DPR 6.7%DCE
PTA +.45T +.56UDC -.86FLC 99%R 8/2019

50K GTPI 92%R
+2260 G
OCD PLANET DANICA-ET
840003004202172 100%RHA-NA
5-05 93 EEEVE GMD DOM 01/24/2009

PTA +1815M +41F +49P 93%R 8/2019
PTA +516NM -.09%F -.02%P
PTA +3.6PL 2.88SCS +.2DPR 6.0%DCE
PTA +1.30T +1.57UDC -.46FLC 92%R 8/2019
PTA +127FE +0.7FI 6.8%SCE

50K GTPI 94%R
+1993 G
MISS ELEGANT DELIGHT-ET
USA 63238366 100%RHA-NA
2-09 88 VV++E DOM 10/11/2006

PTA +1077M +20F +20P 95%R 8/2019
PTA +259NM -.07%F -.05%P
PTA +1.9PL 2.96SCS +1.1DPR 8.0%DCE
PTA +1.17T +1.69UDC +.15FLC 94%R 8/2019

AGE	X	DAYS	MILK	DCRM	%	FAT	%	PRT	DCRC
**	2-02	3	305	27850	90	3.4	958	3.1	855 90

AGE	X	DAYS	MILK	DCRM	%	FAT	%	PRT	DCRC
**	3-01	3	305	34230	90	3.5	1190	3.1	1062 88
			365	39240	90	3.5	1384	3.2	1240 88

অনুমোদিত

(Signature)

(ডা. পল্লব কুমার দত্ত)
সহকারী পরিচালক (প্রশিক্ষণ)
প্রাথমিক অধিদপ্তর বাংলাদেশ, ঢাকা।

Protein reported is crude protein.

005631010

2965069

11/11/2019



Date: June 26, 2020

From: Justin Tank, DVM, Staff Veterinarian, Select Sires, Inc.

To: Whom it may concern

Regarding: 7HO11525 MR OCD ROBUST DONATELLO-ET 3006989495

The bull has been tested annually unless stipulated in the test protocol against the diseases listed below with negative results by the Veterinary authorities of the exporting country:

- | | |
|-----------------------|--|
| 1. Tuberculosis | Intradermal tuberculin test in the caudal fold with bovine PPD tuberculin. |
| 2. Brucellosis | Standard tube agglutination test or Buffered Brucella Antigen test or Complement Fixation test. |
| 3. Trichomoniasis | Culture of preputial washing with microscopic examinations of culture. |
| 4. Campylobacteriosis | Culture of preputial washing with microscopic examinations of culture. |
| 5. Leptospirosis | Microtiter agglutination test for serotypes: L. pomona, L. hardjo, L. icterohemorrhagiae, L. canicola and L. grippityphosa |

Justin Tank 26-Jun-2020

Name: Justin Tank, D.V.M.
Address: Select Sires, Inc.
11740 U. S. 42, Plain City, Ohio 43064

অনুমোদিত

১৬/৬/২০২০

(ডা. পল্লব কুমার দত্ত)
সহকারী পরিচালক (প্রশিক্ষণ)
আগস্টোপদ অধিদপ্তর বাংলাদেশ, ঢাকা।

YOUR SUCCESS Our Passion.

SAMURI 7HO12897

HO840003133106322

OCD SPRING SAMURI-ET TR TP TC TY TV TL TD HH1T HH2T HH3T HH4T HH5T HH6T

SPRING X SUPERSIRE X ROBUST

Born On: September 28, 2015

Beta-casein: A2A2 Kappa-casein: BB EFI: 9.0% aAa: 243

Sire: WESTENRADE ALTASPRING

Dam: OCD SUPERSIRE 9882-ET VG-86

2-01 3X 365D 14456 kgM 4.1% 594 kgF 3.2% 464 kgP

MGS: SEAGULL-BAY SUPERSIRE-ET

Daughter Average:

12661 kgM 561 kgF 4.40%F 429 kgP 3.40%P



Wilra Samuri 1419-ET



Plain-Knoll Samuri 1712-ET



Wilra Samuri 1419-ET

INDEXES

TPI	2736
NM\$	596
CM\$	637
Feed Efficiency (%)	166
DWP\$	469
WT\$	-79
CW\$	-23

PRODUCTION

PTA Milk (lbs)	415
PTA Protein (lbs)	38
PTA Protein (%)	0.09
PTA Fat (lbs)	77
PTA Fat (%)	0.21
Production Reliability %	98
Dtrs/Herds	786/125

TYPE

PTA Type	1.12
Udder Composite	0.94
Feet & Leg Composite	0.41
Body Weight Composite	0.62
Dairy Composite	1.04
Type Reliability %	94
Dtrs/Herds	111/44

WELLNESS TRAITS

CDCB ZOETIS

Mastitis/Rel.%	1.2/75	98/58
Lameness/Rel.%		96/59
Retained Placenta/Rel.%	-0.4/81	93/62
Metritis/Rel.%	-0.3/72	95/62
Cow Abortion/Rel.%		95/47
Twinning/Rel.%		99/57
Cystic Ovary/Rel.%		96/42
Hypocalcemia/Milk	0.2/64	101/53
Fever/Rel. %		
Ketosis/Rel.%	1.2/70	106/61
Displaced Abomasum/Rel.%	0.6/72	101/59
Cow Respiratory		98/53
Disease/Rel.%		
Calf Respiratory/Rel. %		100/85
Calf Scours/Rel. %		96/92
Calf Livability/Rel. %		97/91

DAUGHTER FERTILITY

Fertility Index	2.2
DPR/Rel.%	1.7/88
HCR/Rel.%	3.2/95
CCR/Rel.%	3.4/88

SIRE FERTILITY

SCR/Rel %	3.0/99
-----------	--------

MANAGEMENT TRAITS

SCE/Rel %	7.8/99
DCE/Rel.%	7.5/89
Gestation Length/Rel.%	-2.7/97
Early First Calving/Rel.%	3.6/73
SSB/Rel.%	7.8/98
DSB/Rel.%	6.2/85
Productive Life/Rel.%	3.7/88
Livability/Rel.%	0.8/72
SCS/Rel.%	3.02/96
Milking Speed/Rel.%	101/78

Stature	Short	1.05	Tall
Strength	Frail	0.67	Strong
Body Depth	Shallow	0.51	Deep
Dairy Form	Tight Ribbed	0.75	Open Ribbed
Rump Width	Narrow	1.22	Wide
Rump Angle	High Pins	1.17	Sloped
Rear Leg (side view)	Posty	0.60	Sickled
Rear Leg (rear view)	Hock-in	0.50	Straight
Foot Angle	Low Angle	-0.07	Steep Angle
Feet & Leg Score	Low	0.69	High
Fore Udder	Loose	1.14	Strong
Rear Udder Height	Low	1.30	High
Rear Udder Width	Narrow	1.20	Wide
Udder Cleft	Weak	0.60	Strong
Udder Depth	Deep	1.23	Shallow
Front Teat Placement	Wide	1.15	Close
Rear Teat Placement	Wide	1.16	Close
Teat Length	Short	-1.24	Long

WORLD WIDE SIRES LTD.
www.wwsires.com • Email: info@wwsires.com

Information for April 2020, provided by the following:
Production: CDCB-Genomic Type:CDCB/HA Genomic Service Sire Calving Ease: IB/MACE Daughter Calving Ease:IB/MACE Wellness: CDCB & Zoetis 04/20
Qualifies for export to the E.U.

অনুমোদিত

(Signature)

(ডা. পবন কুমার দত্ত)

সহকারী পরিচালক (প্রশিক্ষণ)

প্রাণিসম্পদ অধিদপ্তর বাংলাদেশ, ঢাকা।



OFFICIAL HOLSTEIN PEDIGREE



U.S. Registered Holsteins
FOR MAXIMUM PROFIT

Holstein Association USA, Inc.

U.S. Registered Holsteins
FOR MAXIMUM PROFIT

www.holsteinusa.com

99% Registered Holstein Ancestry (RHA-I)

OCD SPRING SAMURI-ET
840003133106322 99%RHA-I TR TP TC TY TV

7HO12897 SAMURI
09/28/2015 MALE

PTA	+415M	+77F	+38P	98%R	4/2020
PTA	+596NM	+21%F	+09%P	100%US	
PTA	+3.7PL	3.02SCS	+1.7DPR	7.5%DCE	
PTA	+1.12T	+0.94UDC	+0.41FLC	94%R	4/2020
PTA	+166FE	+2.2FI	7.8%SC		
D/AV	27913M	4.4%F	1237F	3.4%P	946P 82.5T

SELECT SIRES, INC.
11740 US HIGHWAY 42 N
PLAIN CITY, OH 43064-9440
614/873-4683

MOUNTFIELD SSI DCY MOGUL-ET
840003006972816 100%RHA-NA TR TP TC TY TV
7-00 93 EEVE GM 8/15 06/22/2010

PTA	+672M	+51F	+20P	99%R	4/2020
PTA	+339NM	+09%F	+00%P	63%US	
PTA	+0.8PL	3.11SCS	-2.4DPR	5.8%DCE	
PTA	+1.37T	+2.25UDC	+1.33FLC	99%R	4/2020

WESTENRADE CARRERA
NLD 931730982 99%RHA-I TL TD
03/28/2011

PTA	+790M	+6F	+28P	84%R	4/2020
PTA	+22NM	-08%F	+01%P		
PTA	-1.1PL	3.23SCS	-1.6DPR	9.2%DCE	
PTA	+0.01T	-0.13UDC	+0.13FLC	81%R	4/2020

WESTENRADE ALTASPRING-ET
NLD 949033666 99%RHA-I TR TP TC TY TV
GM 8/18 02/22/2013

PTA	+663M	+57F	+35P	99%R	4/2020
PTA	+429NM	+11%F	+05%P	39%US	
PTA	+1.6PL	3.09SCS	-1.1DPR	7.3%DCE	
PTA	+1.46T	+2.26UDC	+0.78FLC	99%R	4/2020
PTA	+132FE	-0.3FI	9.2%SC		

OCD SUPERSIRE 9882-ET
840003011890130 100%RHA-NA
2-10 86 VV++V DOM 12/02/2013

PTA	+482M	+59F	+29P	95%R	4/2020
PTA	+476NM	+14%F	+05%P		
PTA	+3.9PL	2.78SCS	+1.4DPR	6.9%DCE	
PTA	+0.79T	-0.23UDC	-0.55FLC	93%R	4/2020
PTA	+117FE	+1.8FI	8.1%SC		

AGE	X	DAYS	MILK	DCRM	%	FAT	%	PRT	DCRC
*	2-01	3	305	28000	93	3.9	1091	3.3	923 83
			365	31870	93	4.1	1310	3.4	1083 83

SEAGULL-BAY SUPERSIRE-ET
USA 69981349 100%RHA-NA TR TP TC TY TV
6-06 90 EEVV GM 12/17 12/28/2010

PTA	+1399M	+73F	+43P	99%R	4/2020
PTA	+526NM	+07%F	+00%P	72%US	
PTA	+3.6PL	2.93SCS	-2.0DPR	6.9%DCE	
PTA	-0.04T	-0.28UDC	-0.81FLC	99%R	4/2020

OCD ROBUST SHIMMER-ET
840003008315320 100%RHA-NA
7-08 90 EEEV 2E DOM 03/08/2011

PTA	+795M	+33F	+21P	90%R	4/2020
PTA	+313NM	+01%F	-01%P		
PTA	+3.1PL	2.80SCS	-1.1DPR	7.7%DCE	
PTA	+0.79T	+1.18UDC	-0.11FLC	90%R	4/2020

AGE	X	DAYS	MILK	DCRM	%	FAT	%	PRT	DCRC
**	2-03	3	305	28960	92	3.5	1003	3.1	906 90
			365	34350	92	3.5	1200	3.2	1086 90
**	4-08	3	305	32850	90	3.8	1255	3.2	1044 90
			308	33090	90	3.8	1265	3.2	1052 90
**	5-08	3	305	35110	90	3.4	1195	3.1	1089 90
			365	40710	90	3.5	1407	3.1	1277 90
***	7-06	3	106	11040		4.5	501	2.8	306
	LIFE		1509	146810		3.7	5485	3.2	4646

অনুমোদিত

(ডা. পল্লব কুমার দত্ত)
সহকারী পরিচালক (প্রশিক্ষণ)
পশুস্বাস্থ্য অধিদপ্তর বাংলাদেশ, ঢাকা।

Protein reported is crude protein 005720450 3017828 5/22/2020



Date: June 26, 2020

From: Justin Tank, DVM, Staff Veterinarian, Select Sires, Inc.

To: Whom it may concern

Regarding: 7HO12897 OCD SPRING SAMURI-ET 3133106322

The bull has been tested annually unless stipulated in the test protocol against the diseases listed below with negative results by the Veterinary authorities of the exporting country:

- | | |
|-----------------------|--|
| 1. Tuberculosis | Intradermal tuberculin test in the caudal fold with bovine PPD tuberculin. |
| 2. Brucellosis | Standard tube agglutination test or Buffered Brucella Antigen test or Complement Fixation test. |
| 3. Trichomoniasis | Culture of preputial washing with microscopic examinations of culture. |
| 4. Campylobacteriosis | Culture of preputial washing with microscopic examinations of culture. |
| 5. Leptospirosis | Microtiter agglutination test for serotypes: L. pomona, L. hardjo, L. icterohemorrhagiae, L. canicola and L. grippityphosa |

Justin Tank 26-JUN-2020

Name: Justin Tank, D.V.M.
Address: Select Sires, Inc.
11740 U. S. 42, Plain City, Ohio 43064

অনুমোদিত

[Signature]

(ডা. পল্লব কুমার দত্ত)
সহকারী পরিচালক (প্রশিক্ষণ)
প্রাণিসম্পদ অধিদপ্তর বাংলাদেশ, ঢাকা।

YOUR SUCCESS Our Passion.